



Harlow Leisure Centre

THE TASK

Schal project managed the development of Leisurezone's extensive facilities, which include an 8 lane 25m pool and a learner pool. There are also 3 covered tennis courts and 8 badminton courts. The centre also has a 1100m² gym and associated changing facilities, crèche/nursery, multi function spaces and on-site catering and bars. The building is 14,000m² built over 3 floors. The project also includes over 500 car parking spaces and hard/soft landscaping.

Using Schal's knowledge of construction methods and sequencing, modifications to the scheme were made at the early design stages to ease construction access and ongoing future maintenance. Schal also provided risk management services for the project.

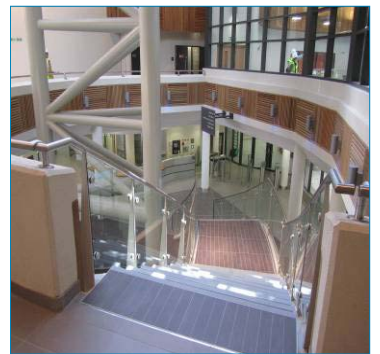
One of the challenges from day one was the delicate balance required between the design and the environment. Following an ecological survey of the site a number of areas of Bee orchids were identified. Whilst not a protected species they do enhance the local biodiversity of the area so funds from the project were made available to move the plants to another site in the area.

Schal's experience with a number of similar projects enabled its Project Management team to identify in the early stages that Leisurezone's widely spread design team could have presented challenges if not managed proactively. Schal's solution was to actively promote the use of web collaboration software, enabling Schal to help balance differing commercial and technical goals for the project. This also significantly reduced the amount of paper used on the project and provided a robust audit trail which satisfied the scrutiny of the National Audit Office.

Award

Winner, Best Commercial Development" category at the Local Authority Building Control East Anglia Excellence Awards 2011.

PROJECT PROFILE



CLIENT

Harlow & District Sports Trust and Homes and Communities Agency

PROJECT VALUE

£27m

SERVICES

- Project management
- CDM Co-ordinator

TYPE

New Build

START DATE

2005

COMPLETION DATE

2010

ARCHITECTS

Saunders